

# Cu-In (Copper-Indium)

H. Okamoto

The Cu-In phase diagram in [Massalski2] (adopted from [1989Sub]) was revised by [1994Oka] based on the work of [1993Bol].

[2003Bah] reinvestigated the Cu-In phase diagram using differential scanning calorimetry, powder x-ray diffraction, metallography, and electron probe microanalysis. The result is shown in Fig. 1. This phase diagram is similar to that of [2003Bah]. In the diagram of [Massalski2], three phases exist in the  $\eta$  phase range and  $\text{Cu}_{11}\text{In}_9$  is unstable at room temperature (stable between 310 and 157 °C).

## References

- 1989Sub:** P.R. Subramanian and D.E. Laughlin, The Cu-In (Copper-Indium) System, *Bull. Alloy Phase Diagrams*, Vol 10 (No. 5), 1989, p 554-568
- 1993Bol:** A. Bolcavage, S.W. Chen, C.R. Kao, and Y.A. Chang, Phase Equilibria of the Cu-In System. I: Experimental Investigation, *J. Phase Equilibria*, Vol 14 (No. 1), 1993, p 14-30
- 1994Oka:** H. Okamoto, Comment on Cu-In (Copper-Indium), *J. Phase Equilibria*, Vol 15 (No. 2), 1994, p 226-227
- 2003Bah:** Z. Bahari, E. Dichi, B. Legendre, and J. Dugué, The Equilibrium Phase Diagram of the Copper-Indium System: A New Investigation, *Thermochim. Acta*, Vol 401, 2003, p 131-138

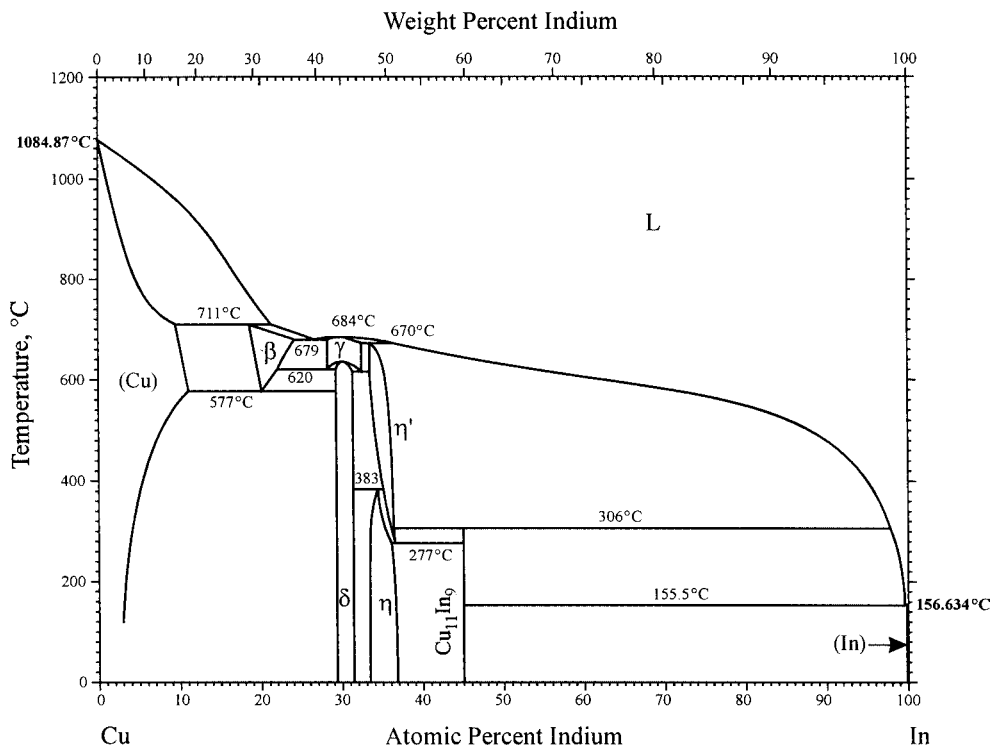


Fig. 1 Cu-In phase diagram